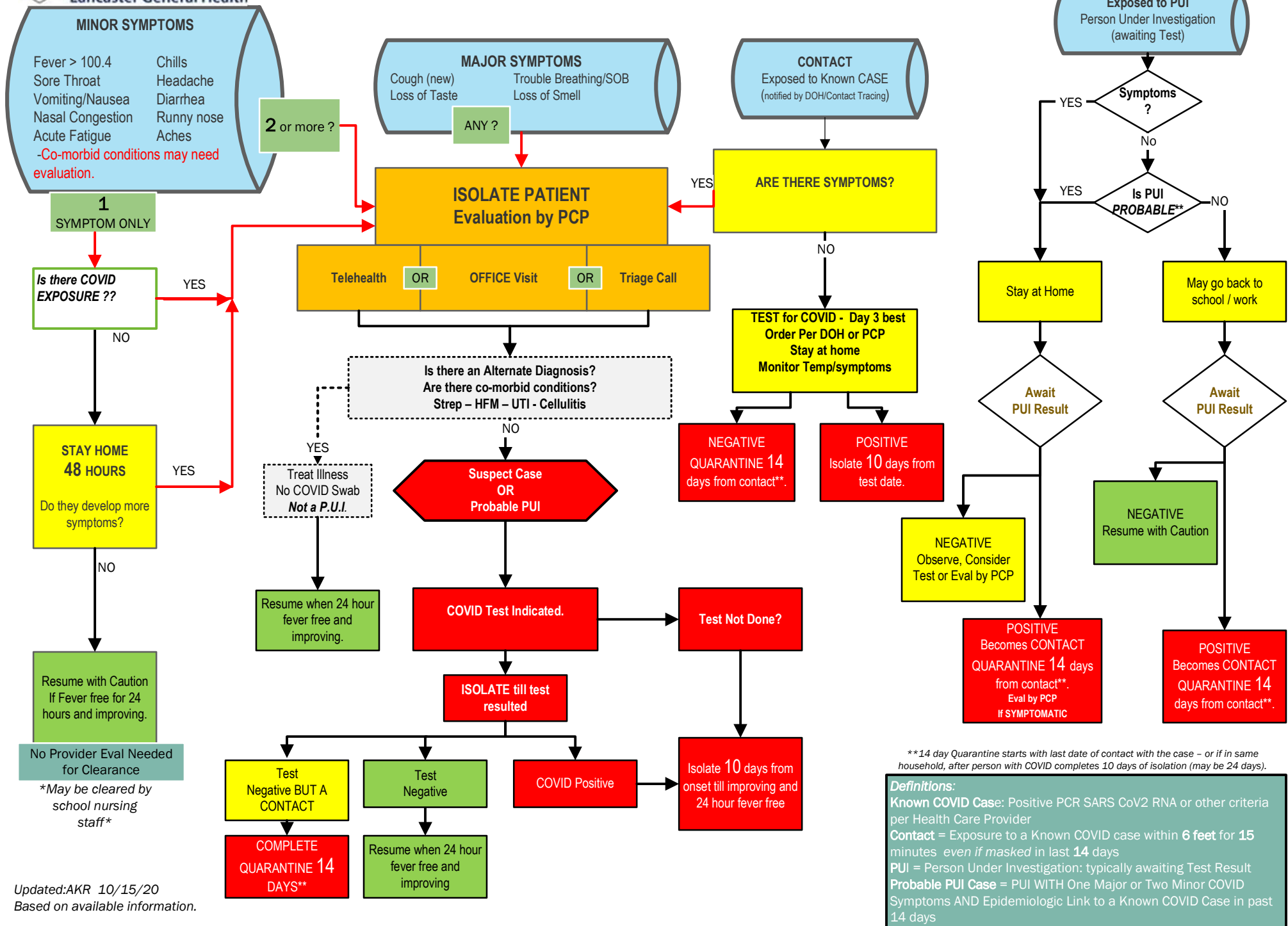


# Provider COVID-19 Action Plan: Pediatric



\*\*14 day Quarantine starts with last date of contact with the case - or if in same household, after person with COVID completes 10 days of isolation (may be 24 days).

**Definitions:**  
**Known COVID Case:** Positive PCR SARS CoV2 RNA or other criteria per Health Care Provider  
**Contact =** Exposure to a Known COVID case within 6 feet for 15 minutes even if masked in last 14 days  
**PUI =** Person Under Investigation: typically awaiting Test Result  
**Probable PUI Case =** PUI WITH One Major or Two Minor COVID Symptoms AND Epidemiologic Link to a Known COVID Case in past 14 days