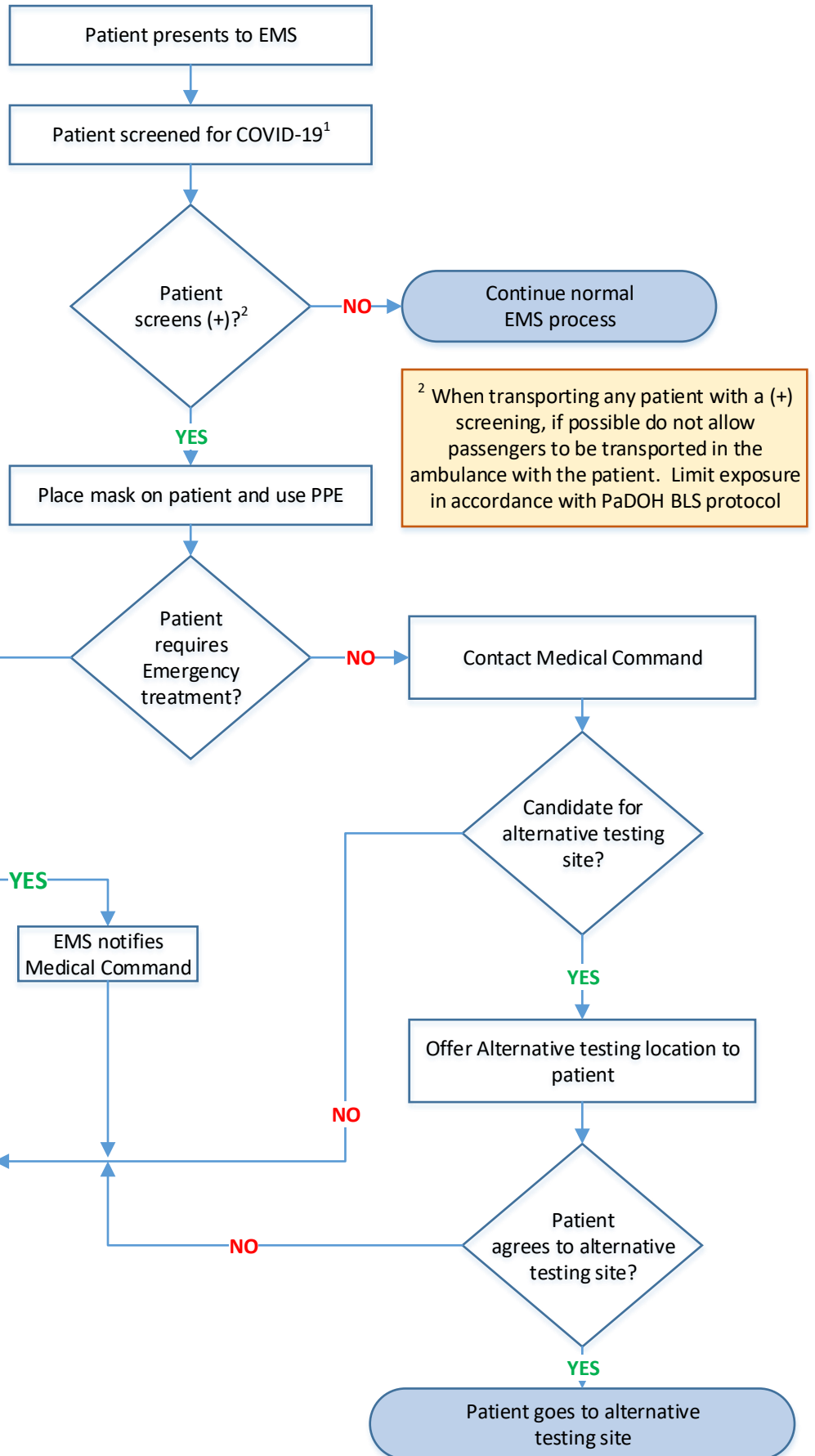


Lancaster General Health EMS Patient Screening Process Release/ Transporting to Alternate Site

¹COVID-19 Screening Questions

- Have you traveled to any areas with widespread COVID-19 transmission
- Were you informed that you have been exposed to someone with presumed or confirmed coronavirus?
- Are you currently experiencing any of the following symptoms
 - Fever
 - Cough
 - Shortness of breath



² When transporting any patient with a (+) screening, if possible do not allow passengers to be transported in the ambulance with the patient. Limit exposure in accordance with PaDOH BLS protocol